

TEAM ONE



Team One, a wholly owned subsidiary of the Bartlett Group, is seeking qualified craft personnel to support the fall of **2007 Refueling Outage** for the **Crystal River Nuclear Power Plant**. Plant will be shut down for 30 days with mid-October staffing dates. Team One seeks the following skilled crafts:

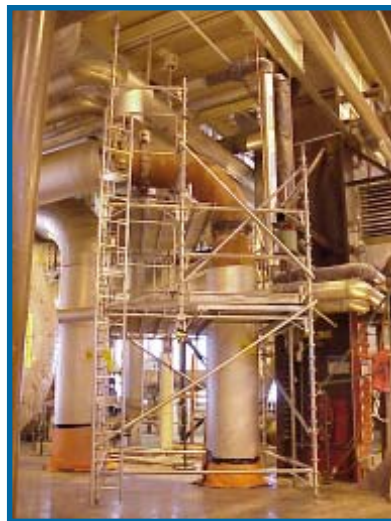
- **RIGGERS**
- **CRANE OPERATORS**
- Insulators
- Painters
- Scaffold builders

We offer a strong compensation package which includes:

- 72 hour work week (6 x 12's)
- Per diem at \$80 per day
- Travel allowance in and out of the job up to \$350 each way

Candidates must pass a drug screen, a 5 year NRC background investigation, including criminal and FBI, and a fitness for duty exam. Please fax or e-mail resume prior to calling.

Anne Stanowski
Regional Office
Phone: 1-800-387-5318
Fax: 724-887-4067
anne@bartlettinc.com
60 Industrial Park Road
Plymouth, MA 02360
EOE



BARTLETT